



- 1 The table shows the amount received when exchanging **\$100** in some countries.

Country	Amount received for \$100
Wales	77.05 pounds
India	7437.05 rupees
China	671.20 yuan
Spain	85.35 euros

- (a) Brad changes \$250 to Indian rupees.

Calculate the amount he receives correct to the nearest rupee.

..... rupees [2]

- (b) Wang changes 5400 Chinese yuan into dollars.

Calculate how much he receives in dollars, correct to the nearest cent.

\$ ..... [2]

- (c) Gretal lives in Spain and goes on holiday to Wales.  
She spends 3500 euros in total on travel and hotels in the ratio

$$\text{travel} : \text{hotels} = 4 : 3.$$

- (i) Work out how much Gretal spends, in euros, on travel.

..... euros [2]

- (ii) Work out how much she spends, **in pounds**, on hotels.

..... pounds [3]

- (iii) Greta flies home to Spain.

The plane flies a distance of 2200 km, correct to the nearest 100 km.

The average speed of the plane is 740 km/h, correct to the nearest 20 km/h.

Calculate the lower bound of the time taken, in hours and minutes, for this flight.

..... h ..... min [3]

- 2 The table shows the number of each type of bird seen in a garden on Monday.

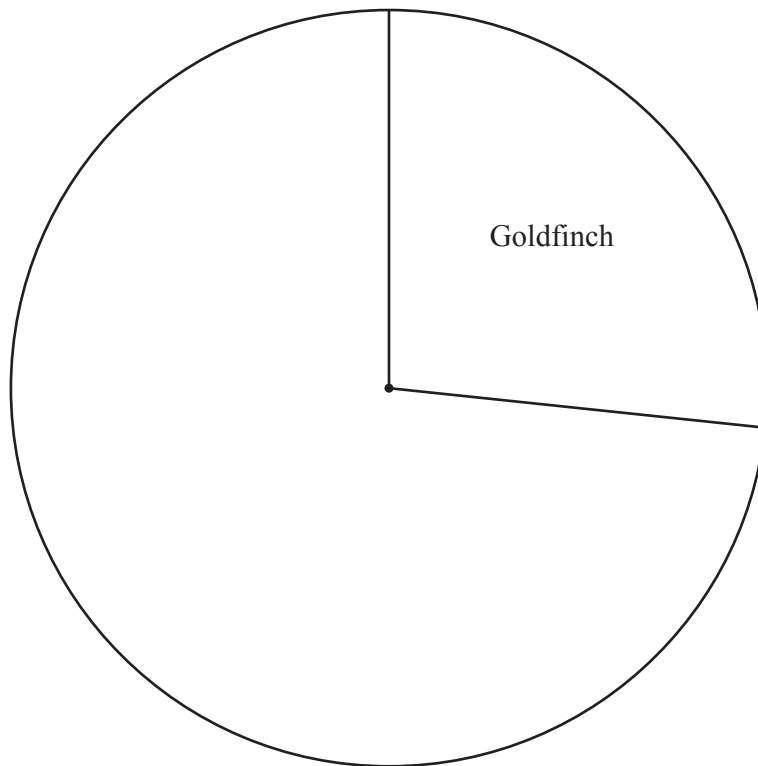
Type of bird	Frequency	Pie chart sector angle
Goldfinch	8	$96^\circ$
Jay	6	
Starling	11	
Robin	5	

- (a) Find the percentage of the birds that are Starlings.

..... % [2]

- (b) (i) In the table, complete the column for the pie chart sector angle. [2]

- (ii) Complete the pie chart to show the information in the table.



[2]

- (c) On Tuesday, the number of Goldfinches seen in the garden increased by 262.5%.

Calculate the number of Goldfinches seen on Tuesday.

..... [2]

- (d) One of the most common birds in the world is the Red-Billed Quelea which lives in Sub-Saharan Africa.

There are approximately 1500 million of these birds in this area.

- (i) Write 1500 million in standard form.

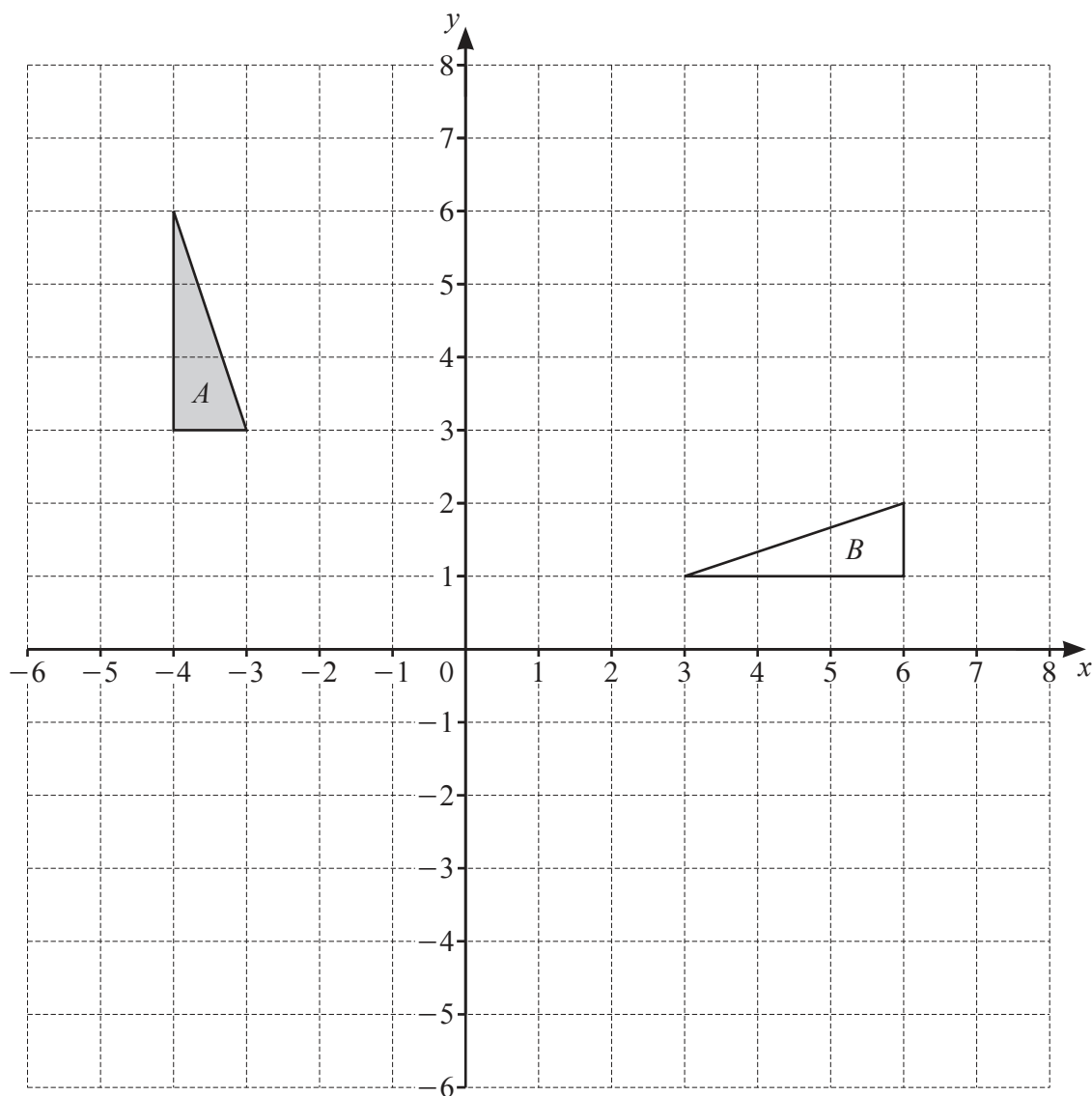
..... [1]

- (ii) The land area of Sub-Saharan Africa is approximately 21.2 million square kilometres.

Work out the average number of these birds per square kilometre.

..... birds/km<sup>2</sup> [2]

3



- (a) Describe fully the **single** transformation that maps triangle  $A$  onto triangle  $B$ .

.....  
 ..... [3]

- (b) Draw the image of triangle  $A$  after

(i) a reflection in the line  $y = 1$  [2]

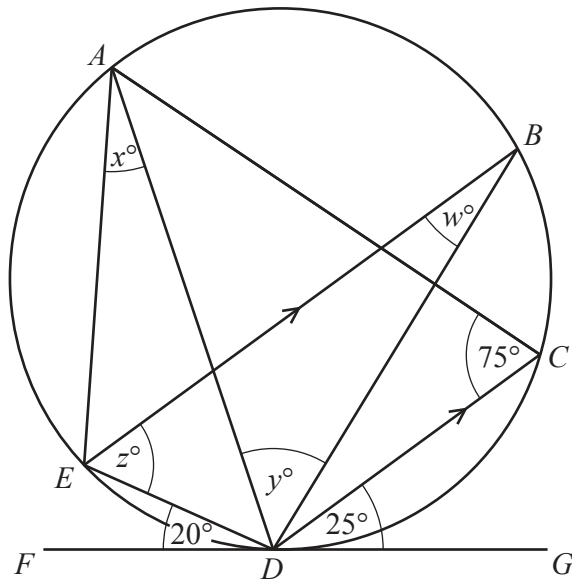
(ii) a translation by the vector  $\begin{pmatrix} 5 \\ -7 \end{pmatrix}$  [2]

(iii) an enlargement, scale factor 2, centre  $(-4, 5)$ . [2]

- 4 (a) Find the size of one interior angle of a regular 10-sided polygon.

..... [2]

(b)



NOT TO  
SCALE

The points  $A$ ,  $B$ ,  $C$ ,  $D$  and  $E$  lie on a circle.  
 $FG$  is a tangent to the circle at  $D$ .  
 $EB$  is parallel to  $DC$ .

Find the value of each of  $w$ ,  $x$ ,  $y$  and  $z$ .

$w =$  .....

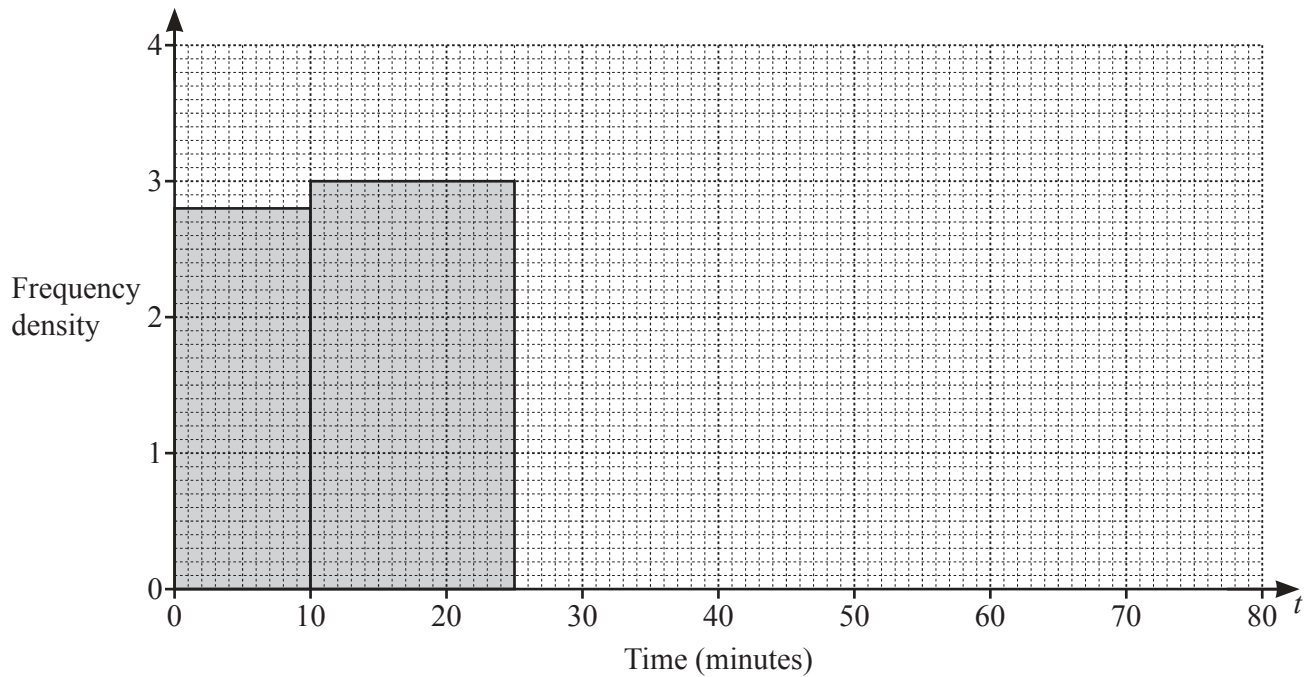
$x =$  .....

$y =$  .....

$z =$  ..... [5]

- 5 Indira records the time taken for workers in her company to travel to work.  
The table and the histogram each show part of this information.

Time ( $t$ minutes)	$0 < t \leq 10$	$10 < t \leq 25$	$25 < t \leq 40$	$40 < t \leq 60$	$60 < t \leq 80$
Frequency			57	38	12



- (a) Complete the table and the histogram.

[5]

- (b) Calculate an estimate of the mean time.

..... min [4]



(c) Rashid says:

‘The longest time that any of these workers take to travel to work is 80 minutes.’

Give a reason why Rashid may be wrong.

.....

..... [1]

(d) Indira picks three workers at random from those who take longer than 25 minutes to travel to work.

Calculate the probability that one worker takes 60 minutes or less and the other two each take more than 60 minutes.

..... [4]

6  $f(x) = 5x - 3$        $g(x) = 64^x$        $h(x) = \frac{2}{x+1}, \quad x \neq -1$

(a) Find the value of

(i)  $f(2)$

..... [1]

(ii)  $gf(0.5)$ .

..... [2]

(b) Find  $h^{-1}(x)$ .

$h^{-1}(x) =$  ..... [3]

(c) Find  $x$  when  $g(x) = \frac{1}{2^5}$ .

$x =$  ..... [2]

(d) Write as a single fraction in its simplest form  $\frac{1}{f(x)} - h(x)$ .

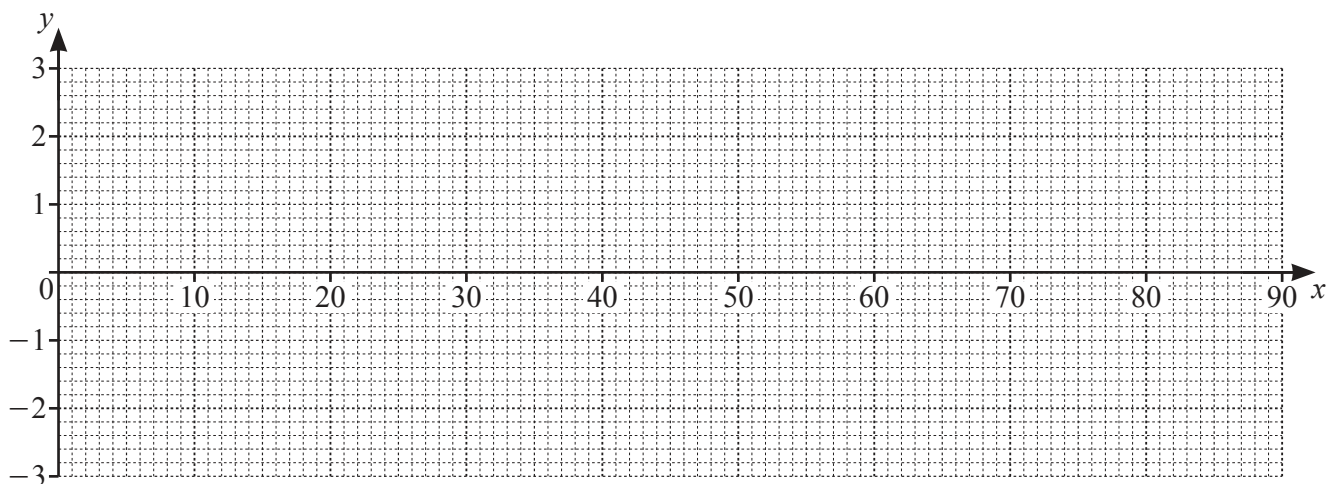
..... [4]

- 7 (a) Complete the table of values for  $y = 3 \cos 2x^\circ$ .  
Values are given correct to 1 decimal place.

$x$	0	10	20	30	40	45	50	60	70	80	90
$y$	3.0	2.8	2.3	1.5	0.5		-0.5		-2.3		-3.0

[3]

- (b) Draw the graph of  $y = 3 \cos 2x^\circ$  for  $0 \leq x \leq 90$ .



[4]

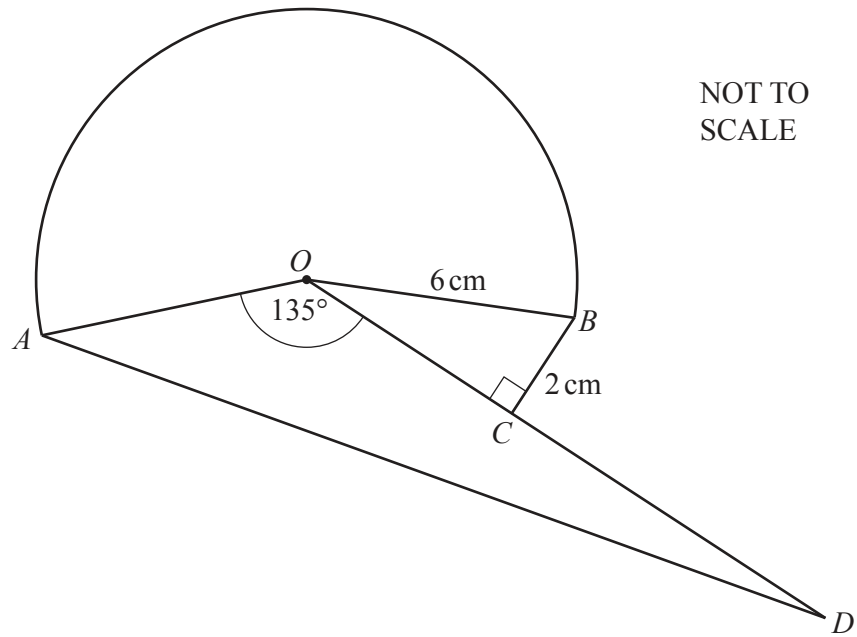
- (c) Use your graph to solve the equation  $3 \cos 2x^\circ = -2$  for  $0 \leq x \leq 90$ .

$x = \dots\dots\dots$  [1]

- (d) By drawing a suitable straight line, solve the equation  $120 \cos 2x^\circ = 80 - x$  for  $0 \leq x \leq 90$ .

$x = \dots\dots\dots$  [3]

8 (a)



The diagram shows a shape made from a major sector  $AOB$  and triangles  $OBC$  and  $AOD$ .  
 $OB = 6\text{ cm}$ ,  $BC = 2\text{ cm}$ , obtuse angle  $AOC = 135^\circ$  and angle  $BCO = 90^\circ$ .

- (i) Show that angle  $BOC = 19.5^\circ$ , correct to 1 decimal place.

[2]

- (ii) Calculate the area of the major sector  $AOB$ .

.....  $\text{cm}^2$  [3]

- (iii)  $C$  is the midpoint of  $OD$ .

Calculate  $AD$ .

..... cm [5]

- (iv) Calculate the total area of the shape.

.....  $\text{cm}^2$  [4]

- (b) A sector of a circle has radius 8 cm and area  $160 \text{ cm}^2$ .  
A mathematically similar sector has radius 20 cm.

Calculate the area of the larger sector.

.....  $\text{cm}^2$  [3]

9  $A$  is the point  $(0, 2)$ ,  $B$  is the point  $(3, 3)$  and  $C$  is the point  $(4, 0)$ .

- (a) Determine if triangle  $ABC$  is scalene, isosceles or equilateral.  
You must show all your working.

[4]

- (b) (i) Find the equation of the line  $AC$ .  
Give your answer in the form  $y = mx + c$ .

$y = \dots\dots\dots$  [3]

- (ii) Find the equation of the perpendicular bisector of  $AC$ .  
Give your answer in the form  $y = mx + c$ .

$y = \dots\dots\dots$  [4]

- (iii)  $ABCD$  is a kite.  
The point  $D$  has coordinates  $(w, 4w + 1)$ .

Find the coordinates of  $D$ .

( ..... , ..... ) [3]

10 (a) Expand and simplify.

$$4(2x - 1) - 6(3 - x)$$

..... [2]

(b) Factorise completely.

(i)  $6x^2y + 9xy$

..... [2]

(ii)  $4x^2 - y^2 + 8x + 4y$

..... [3]



- (c) Antonio travels 100 km at an average speed of  $x$  km/h.  
 He then travels a further 150 km at an average speed of  $(x + 10)$  km/h.  
 The time taken for the whole journey is 4 hours 20 minutes.

(i) Show that  $13x^2 - 620x - 3000 = 0$ .

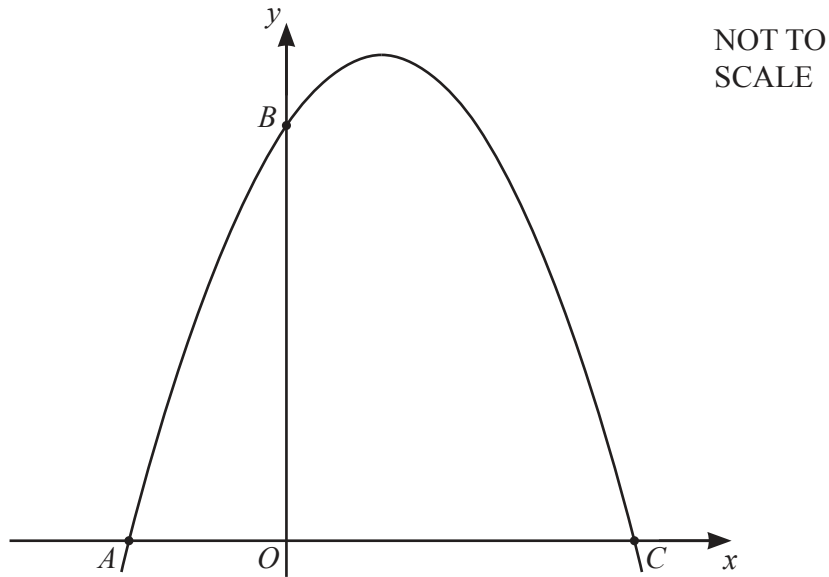
[4]

- (ii) Solve  $13x^2 - 620x - 3000 = 0$  to find the speed Antonio travels for the first 100 km of the journey.  
 You must show all your working and give your answer correct to 1 decimal place.

..... km/h [3]

[Turn over

11



The diagram shows a sketch of  $y = 18 + 5x - 2x^2$ .

(a) Find the coordinates of the points  $A$ ,  $B$  and  $C$ .

$A$  ( ..... , ..... )

$B$  ( ..... , ..... )

$C$  ( ..... , ..... ) [4]

(b) Differentiate  $18 + 5x - 2x^2$ .

..... [2]

(c) Find the coordinates of the point on  $y = 18 + 5x - 2x^2$  where the gradient is 17.

( ..... , ..... ) [3]



**BLANK PAGE**

---

Permission to reproduce items where third-party owned material protected by copyright is included has been sought and cleared where possible. Every reasonable effort has been made by the publisher (UCLES) to trace copyright holders, but if any items requiring clearance have unwittingly been included, the publisher will be pleased to make amends at the earliest possible opportunity.

To avoid the issue of disclosure of answer-related information to candidates, all copyright acknowledgements are reproduced online in the Cambridge Assessment International Education Copyright Acknowledgements Booklet. This is produced for each series of examinations and is freely available to download at [www.cambridgeinternational.org](http://www.cambridgeinternational.org) after the live examination series.

Cambridge Assessment International Education is part of Cambridge Assessment. Cambridge Assessment is the brand name of the University of Cambridge Local Examinations Syndicate (UCLES), which is a department of the University of Cambridge.